

Historic, Archive Document

Do not assume content reflects current scientific knowledge, policies, or practices.



Howell Nurseries

Boys Bridge Road

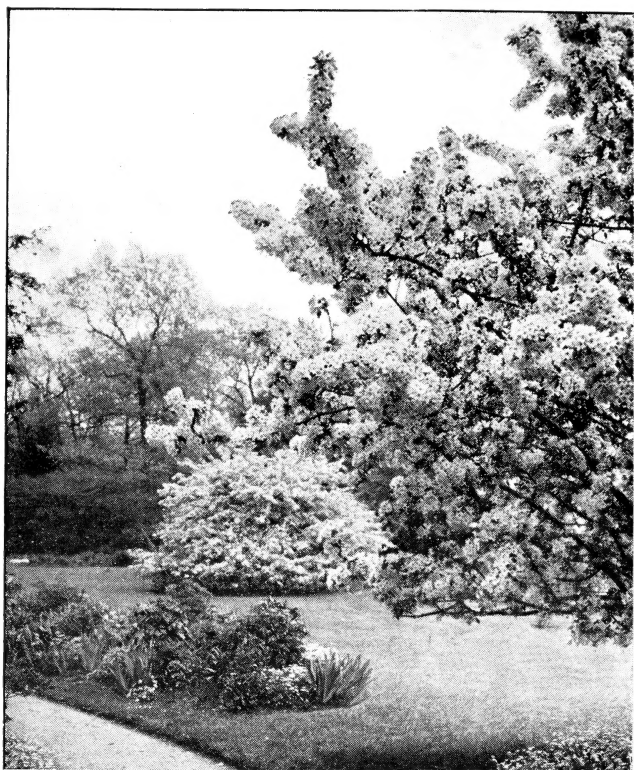
KNOXVILLE · TENNESSEE

Phone: 3-2426

SWEETWATER · TENNESSEE



PRICE-LIST, 1943-1944



Malus (Flowering Crab)

THIS PRICE-LIST is supplementary to and a part of our regular descriptive catalogue, and is issued periodically. In it you are likely to find items not listed in the catalogue; on the other hand, some items in the catalogue will not be priced in this list, as our stock varies from season to season. Our aim is to have the old standard varieties as well as the best of the new ones.

You are invited cordially to come out to the nursery to see our stock as it grows in the fields. If you are interested in plants, we feel sure that we can make your visit of interest, as we delight in showing our stock. We wish to be of service to you should you have problems in either growing or planting. Do not forget to come out and ramble around. If you want something that we do not have, we will try to secure it.

If you have not received our descriptive list, or have lost your copy, we will be pleased to send you another.

This Price-List is arranged alphabetically for your convenience in using our descriptive catalogue. All previously published quotations are canceled by this List.

Plants selected and tagged at the nursery are charged for individually according to value, and these prices do not apply.

Plants marked **B&B** are balled and burlapped for greater safety in handling and planting.

See our descriptive Catalogue for terms of sale. We do not guarantee plants to grow, but if we think that proper care and attention have been given them, we will replace at half price all plants that have died the first season.



Abelia grandiflora

	Each
<i>Abelia grandiflora</i> . 18 to 24 in., B&B.....	\$0 75
2 to 3 ft., B&B.....	1 00
Heavy specimens.....	\$1.50 and 2 50
<i>A. grandiflora</i> , Edward Goucher. 2-yr., B&B.....	1 00
4-yr., B&B.....	1 50
<i>Abies douglasi</i> . 18 to 24 in., B&B.....	2 00
2 to 2½ ft., B&B.....	3 00
3 to 4 ft., B&B.....	3 50
4 to 5 ft., B&B.....	5 00
<i>Acanthopanax pentaphyllum</i> . 2 to 3 ft.....	50
3 to 4 ft.....	75
<i>Acer palmatum atropurpureum</i> . 2 to 3 ft., B&B....	3 50
3 to 4 ft., B&B.....	5 00
4 to 5 ft., B&B.....	7 50
Larger specimens priced on application.	
<i>A. platanoides</i> . 6 to 8 ft.....	2 00
<i>A. saccharum</i> . 8 to 10 ft.....	2 50
<i>Actinidia arguta</i> . 2-yr.....	1 00
<i>Æsculus pavia</i> . Dwarf Red Buckeye. 18 to 24 in...	1 00
2 to 3 ft.....	1 50
3 to 4 ft.....	2 00
<i>Akebia quinata</i> . 2-yr.....	50
<i>Albizia julibrissin</i> . Mimosa. 2 to 3 ft.....	75
4 to 5 ft.....	1 00
8 to 10 ft.....	2 50
<i>Amelanchier canadensis</i> . Service Bush. 8 to 10 ft..	2 50
<i>Amorpha fruticosa</i> . 3 to 4 ft.....	75
<i>Ampelopsis quinquefolia</i> . Virginia Creeper. 2-yr...	50
<i>A. veitchi</i> . Boston Ivy. 2-yr.....	50
Apple. 5 fruiting varieties grafted on 1. 5 to 6 ft...	2 50
Apricot, flowering. Red, Pink and White. Winter bloomer. 3 to 4 ft.....	2 00
<i>Aralia spinosa</i> . 2 to 3 ft.....	50
3 to 4 ft.....	75
4 to 5 ft.....	1 00
5 to 6 ft.....	1 50
<i>Aronia arbutifolia</i> . 3 to 4 ft.....	75
4 to 5 ft.....	1 00
<i>A. arbutifolia brilliantissima</i> . 3 to 4 ft.....	75



Aucuba japonica

	Each
<i>Aucuba japonica</i> . 18 to 24 in., B&B.....	\$2 50
2 to 3 ft., B&B.....	3 50
<i>A. japonica variegata</i> . 12 to 18 in., B&B.....	1 50
18 to 24 in., B&B.....	2 50
2 to 3 ft., B&B.....	3 50
<i>Azalea amœna</i> . 15 in., B&B.....	1 50
18 in., B&B.....	2 00
2 ft., B&B.....	2 50
<i>A. benigni</i> . 12 to 15 in., B&B.....	1 50
15 to 18 in., B&B.....	2 00
18 to 24 in., B&B.....	2 50
<i>A., Carmen</i> . 18 to 24 in., B&B.....	2 00
<i>A., Christmas Cheer</i> . 12 to 15 in., B&B.....	1 50
<i>A., Cleopatra</i> . 18 to 24 in., B&B.....	2 00
<i>A., Firefly</i> . 12 to 18 in., B&B.....	1 50
<i>A. fujimoyo</i> . 18 to 24 in., B&B.....	1 50
2 to 3 ft., B&B.....	2 50
<i>A. hinodegiri</i> . 10 to 12 in., B&B.....	1 50
12 to 15 in., B&B.....	2 00
15 to 18 in., B&B.....	2 50

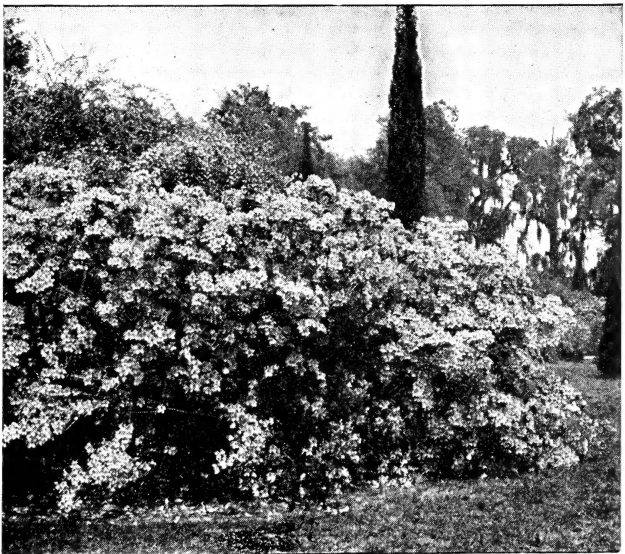


Azalea indica alba



Azalea, Koster Hybrids

	Each
Azalea hinomayo. 12 in., B&B.....	\$1 00
15 in., B&B.....	1 50
18 in., B&B.....	2 00
2 ft., B&B.....	2 50
2 to 3 ft., B&B.....	3 50
A. indica alba. 18 in., B&B.....	2 00
24 in., B&B.....	2 50
A., Koster Hybrids. 12 to 15 in., B&B.....	1 50
15 to 18 in., B&B.....	2 00
18 to 24 in., B&B.....	2 50
2 to 2½ ft., B&B.....	3 00

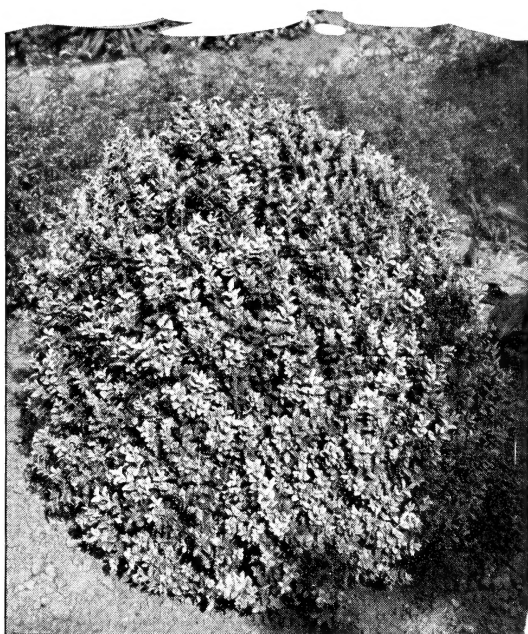


Azalea calendulacea

	Each
Azalea, Louise. 2 to 2½ ft., B&B.....	\$2 50
A. macrantha. 12 in., B&B.....	1 50
15 in., B&B.....	2 00
18 in., B&B.....	2 50
21 in., B&B.....	3 00
A. poukhanensis. 12 in., B&B.....	1 00
15 in., B&B.....	1 50
18 in., B&B.....	2 00
21 in., B&B.....	3 50
A., Snow. 12 to 15 in., B&B.....	2 00
A., Sunstar. 18 in., B&B.....	2 00
A. yodogawa. 2 to 3 ft., B&B.....	2 50
A. arborescens. Native Azalea.	
Specimens, B&B.....	\$3.50 to 7 50
A. calendulacea. B&B.....	\$2.00 to 5 00
A. nudiflora. B&B.....	\$2.00 to 5 00
Baccharis halimifolia. 2 to 3 ft.....	1 00
4 to 5 ft.....	1 50
Bambusa aurea. Clumps.....	\$1.00 to 2 50
B. palmata. Clumps, large.....	1 00
B., Unnamed dwarf varieties. Small foliage.....	1 00
Large foliage.....	1 00
Benzoin æstivale. 2 to 3 ft.....	75
Berberis ilicifolia. 2 to 3 ft., B&B.....	2 50
B. julianæ. 15 to 18 in., B&B.....	1 50
18 to 24 in., B&B.....	2 00
2 to 3 ft., B&B.....	2 50
B. julianæ, B. P. I. 12 to 15 in., B&B.....	1 50
15 to 18 in., B&B.....	2 00
B. mentorensis. 18 to 24 in., B&B.....	1 50
2 to 3 ft., B&B.....	2 00
B. thunbergi. 12 to 15 in.....	35
15 to 18 in.....	50
2 to 3 ft.....	75
B. thunbergi atropurpurea. 12 to 18 in.....	50
18 to 24 in.....	75
2 to 2½ ft.....	1 00
2 to 3 ft.....	1 50
B. triacanthophora. 2 to 3 ft., B&B.....	1 50
B. verruculosa. 12 to 15 in., B&B.....	2 00



Berberis thunbergi atropurpurea



Buxus

	Each
Betula alba pendula laciniata. 7 to 8 ft.....	\$5 00
Bignonia, Mme. Gallen. 3-in. pots.....	50
Buddleia, Charming. 2 to 3 ft.....	75
B. variabilis. 2 to 3 ft.....	75
B. variabilis, Ile de France. 2 to 3 ft.....	75
B. variabilis, Dubonnet. 2 to 3 ft.....	75
Buxus sempervirens . . . According to size, \$1.00 to	25 00
Callicarpa americana. 2 to 3 ft.....	50
3 to 4 ft.....	75
C. americana alba. White Beautyberry. 2 to 3 ft..	75
3 to 4 ft.....	1 00
C. purpurea. 2 to 3 ft.....	50
3 to 4 ft.....	75
Calluna vulgaris. 8 to 10 in., B&B.....	1 00
12 to 15 in., B&B.....	1 50
Calycanthus floridus. 2 to 3 ft.....	75
Larger clumps	1 00



Calluna vulgaris

	Each
<i>Caragana frutex</i> . 12 to 18 in.....	\$0 75
<i>Castanea mollissima</i> . Chinese Blightproof Chestnut.	
3 to 4 ft.....	1 00
4 to 5 ft.....	1 50
5 to 6 ft.....	2 00
<i>C. pumila</i> . Chinquapin. 2 to 3 ft.....	1 00
3 to 4 ft.....	1 50
<i>Ceanothus americanus</i> . 2 to 3 ft.....	75
<i>C.</i> , Gloire de Versailles. 18 to 24 in., B&B.....	1 00
2 to 3 ft., B&B.....	1 50
3 to 4 ft., B&B.....	2 00
<i>C.</i> , Marie Simon. 2 to 3 ft., B&B.....	2 00
<i>Cedrus atlantica</i> . 4 to 5 ft., B&B.....	3 50
6 to 7 ft., B&B.....	5 00
<i>C. deodara</i> . 2 to 3 ft., B&B.....	1 50
3 to 4 ft., B&B.....	2 50
4 to 5 ft., B&B.....	3 50
<i>C. libani</i> . 4 to 5 ft., B&B.....	3 50
6 to 7 ft., B&B.....	5 00
<i>Celastrus orbiculatus</i> . Large plants.....	1 00
<i>C. scandens</i>	75
<i>Celtis occidentalis</i> . 10 to 12 ft.....	3 00
<i>Cephalotaxus fortunei</i> . 18 to 24 in., B&B.....	2 50
<i>C. harringtonia fastigiata</i> . 12 to 18 in., B&B.....	2 50
18 to 24 in., B&B.....	3 00
2 to 3 ft., B&B.....	4 00



Castanea mollissima



Cedrus deodara

	Each
<i>Cercis canadensis</i> . 3 to 4 ft.....	\$0 75
4 to 5 ft.....	1 00
<i>C. canadensis alba</i> . White Redbud. 2 to 3 ft.....	1 50
3 to 4 ft.....	2 00
<i>C. chinensis</i> . 4 to 5 ft.....	1 00
<i>Chamaecyparis obtusa crippsi aurea</i> . 2 to 3 ft., B&B.	2 00
<i>C. obtusa ericoides</i> . 4 to 5 ft., B&B.....	3 00
<i>C. obtusa nana</i> . 18 to 24 in., B&B.....	3 00
2 to 2½ ft., B&B.....	4 00
2½ to 3 ft.....	4 50
3 to 4 ft.....	5 00
Larger specimens quoted on application.	
<i>C. pisifera</i> . 2 to 3 ft., B&B.....	2 00
4 to 5 ft., B&B.....	3 50
<i>C. pisifera argentea aurea</i> . 2 to 2½ ft., B&B.....	3 00
<i>C. pisifera aurea</i> . 5 to 6 ft., B&B.....	4 00
<i>C. pisifera filifera</i> . 18 to 24 in., B&B.....	2 00
2 to 2½ ft., B&B.....	3 00
<i>C. pisifera plumosa</i> . 18 to 24 in., B&B.....	1 50
2 to 3 ft., B&B.....	2 50
4 to 5 ft., B&B.....	3 50
5 to 6 ft., B&B.....	5 00
<i>C. pisifera plumosa aurea</i> . 2 to 3 ft., B&B.....	2 50
3 to 4 ft., B&B.....	3 50
<i>C. squarrosa veitchi</i> . 3 to 4 ft., B&B.....	2 50
4 to 5 ft., B&B.....	3 50
5 to 6 ft., B&B.....	5 00



Cornus florida (White-flowering Dogwood)

	Each
<i>Chamædaphne calyculata</i> . 12 to 18 in.	\$1 50
<i>Chionanthus virginica</i> . 2 to 3 ft., B&B.	1 50
3 to 4 ft., B&B.	2 00
4 to 5 ft., B&B.	2 50
5 to 6 ft., B&B.	3 50
<i>Citrus trifoliata</i> . 18 to 24 in.	50
5 to 6 ft.	1 50
<i>Cladrastis lutea</i> . 6 to 8 ft.	2 50
<i>Clematis jackmani</i>	1 00
<i>C.</i> , Mme. Edouard Andre.	1 00
<i>C. paniculata</i>	50
<i>Clethra alnifolia</i> . 2 to 3 ft.	75
Larger clumps.	1 00
<i>Colutea arborescens</i> . 3 to 4 ft.	75
4 to 5 ft.	1 00
<i>Comptonia asplenifolia</i> . Sweet Fern. 18 to 24 in.	75
<i>Cornus florida</i> . 2 to 3 ft., B&B.	1 00
3 to 4 ft., B&B.	1 50
4 to 5 ft., B&B.	2 00
<i>C. florida</i> , Moon. 4 to 5 ft., B&B.	2 50
5 to 6 ft., B&B.	3 50
<i>C. florida plena</i> . 3 to 4 ft., B&B.	2 50
4 to 5 ft., B&B.	3 50
<i>C. florida rubra</i> . 2 to 3 ft., B&B.	1 50
3 to 4 ft., B&B.	2 00
4 to 5 ft., B&B.	2 50
5 to 6 ft., B&B.	3 50
Larger specimens priced on application.	
<i>C. florida salicifolia</i> . 3 to 4 ft., B&B.	5 00
<i>C. florida welchi</i> . 4 to 5 ft., B&B.	5 00

	Each
Cornus florida, Wine-Red. 3 to 4 ft., B&B.	\$2 50
4 to 5 ft., B&B.	3 50
5 to 6 ft., B&B.	4 50
A few large specimens priced on application.	
C. sanguinea. 4 to 5 ft.	1 50
Corylus americana. Hazelnut. 3 to 4 ft.	1 00
Cotoneaster divaricata. 18 to 24 in., B&B.	1 50
2 to 3 ft., B&B.	2 00
C. francheti. 4 to 5 ft., B&B.	2 50
C. horizontalis. 18 to 24 in., B&B.	1 50
2 to 3 ft., B&B.	2 00
3 to 4 ft., B&B.	2 50
C. horizontalis perpusilla. 18 to 24 in., B&B.	1 50
2 to 3 ft., B&B.	2 00
C. microphylla. 18 to 24 in., B&B.	1 50
2 to 3 ft., B&B.	2 00
C. salicifolia. 18 to 24 in., B&B.	1 50
2 to 3 ft., B&B.	2 00
3 to 4 ft., B&B.	2 50
Crataegus carrierei. 5 to 6 ft.	2 50
C. cordata. Large specimens priced on application.	
C., Double Pink-flowering. 8 to 10 ft.	3 50
C. oxyacantha. Double; pink. 6 to 7 ft.	2 50
C. persistens. 6 to 7 ft.	2 50
Cunninghamia lanceolata. 18 to 24 in., B&B.	2 00
2 to 3 ft., B&B.	2 50
3 to 4 ft., B&B.	3 50
4 to 5 ft., B&B.	5 00
We have a few fine blue <i>Cunninghamias</i> .	
Cupressus lawsoniana. 3 to 4 ft., B&B.	2 50
4 to 5 ft., B&B.	3 50



Cotoneaster divaricata

	Each
Cydonia japonica. 2 to 3 ft.....	\$0 75
C. japonica, Finest Oregon Hybrids. 2 to 3 ft.....	1 50
C. japonica alba. White-fl. Quince. 2 to 3 ft.....	1 00
C. japonica rosea. 2 to 3 ft.....	75
3 to 4 ft.....	1 00
C. japonica rubra. 2 to 3 ft.....	1 00
C. japonica, Salmon. 2 to 3 ft.....	75
C. japonica, Rose, Pink Center. 2 to 3 ft.....	75
Cytisus scoparius. 2 to 3 ft.....	75
Danaë racemosa. Poets Laurel. 4-yr.....	1 00
Dasylyrion texanum. 2-yr.....	75
3-yr.....	1 00
4-yr.....	1 25
Deutzia crenata. 4 to 5 ft.....	75
D. gracilis. 18 to 24 in.....	75
D. gracilis lemoinei. 18 to 24 in.....	50
2 to 3 ft.....	75
D. gracilis rosea. 18 to 24 in.....	50
2 to 2½ ft.....	60
2½ to 3 ft.....	75
D. magnifica. 2 to 3 ft.....	50
3 to 4 ft.....	75
D., Montrose. 4 to 5 ft.....	1 00
D. scabra, Pride of Rochester. 3 to 4 ft.....	75



Cydonia japonica (Flowering Quince)



Elæagnus

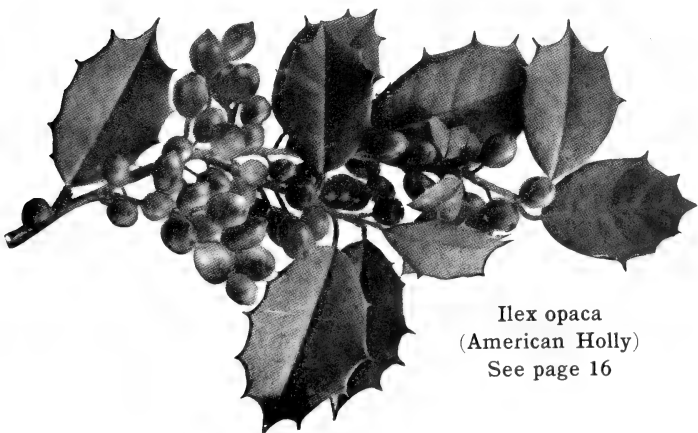
	Each
<i>Elæagnus pungens fruitlandi</i> . 2 to 3 ft., B&B.....	\$1 50
3 to 4 ft., B&B.....	2 00
4 to 5 ft., B&B.....	2 50
<i>E. pungens reflexa</i> . 2 to 3 ft., B&B.....	1 50
3 to 4 ft., B&B.....	2 00
4 to 5 ft., B&B.....	2 50
<i>E. pungens rotundifolia</i> . 2 to 3 ft., B&B.....	1 50
3 to 4 ft., B&B.....	2 00
Large specimens, B&B.....	5 00
<i>E. pungens variegata</i> . 3 to 4 ft., B&B.....	3 00
<i>E. umbellata</i> . 3 to 4 ft.....	1 00
4 to 5 ft.....	1 50
5 to 6 ft.....	2 00
<i>Erica, Winter Beauty</i> . 6 to 8 in., B&B.....	1 00
8 to 12 in., B&B.....	1 50
<i>Euonymus alatus</i> . 2 to 3 ft.....	1 50
3 to 4 ft.....	2 00
4 to 5 ft.....	2 50
6 to 8 ft.....	3 00
<i>E. americanus</i> . 2 to 3 ft.....	75
4 to 5 ft.....	1 50
<i>E. europæus</i> . 2½ to 3 ft.....	75
3 to 4 ft.....	1 00
4 to 5 ft.....	1 50
<i>E. japonicus</i> . 2 to 2½ ft., B&B.....	1 50
<i>E. patens</i> . 2 to 3 ft., B&B.....	1 50
3 to 4 ft., B&B.....	2 00
<i>E. planipes</i> . 6 to 8 ft.....	2 50
<i>E. radicans</i> . 2-yr.....	50
4-yr., large plants.....	1 00
<i>E. radicans coloratus</i> . 18 to 24 in.....	50
<i>E. radicans variegatus</i> . 5-yr.....	1 00
<i>E. radicans vegetus</i> . 12 to 18 in.....	75
18 to 24 in.....	1 00
<i>E. sieboldianus britzensis</i> . 12 to 18 in., B&B.....	1 00
18 to 24 in., B&B.....	1 50
2 to 3 ft., B&B.....	2 00
<i>Exochorda grandiflora</i> . 6 to 8 ft.....	1 50
<i>Fagus americana</i> . 4 to 5 ft.....	3 50
<i>F. sylvatica, Purple</i> . 2 to 3 ft.....	5 00
Flowering Cherry. See <i>Prunus</i> .	
Flowering Crab. See <i>Malus</i> .	
Flowering Peach. See <i>Prunus</i> .	



Forsythia intermedia spectabilis

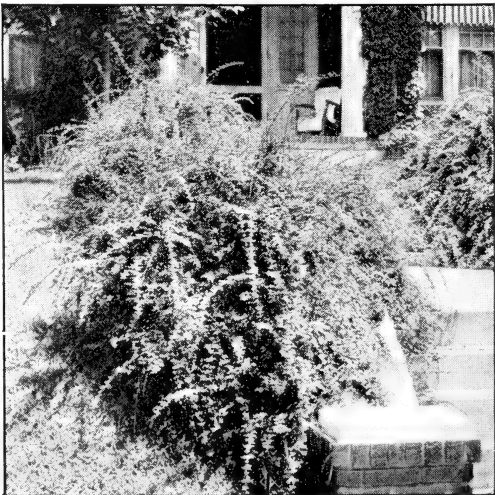
	Each
Flowering Plum. See Plum.	
<i>Forsythia intermedia spectabilis</i> . 2 to 3 ft.....	\$0 50
3 to 4 ft.....	75
4 to 5 ft.....	1 00
5 to 6 ft.....	2 00
<i>F. suspensa</i> . 3 to 4 ft.....	75
6 to 8 ft.....	1 50
<i>F. ovata</i> . 18 to 24 in.....	1 00
<i>F. viridissima</i> . 3 to 4 ft.....	75
<i>Fraxinus americana</i> . 8 to 10 ft.....	2 50
<i>Gelsemium sempervirens</i> . 5-yr., heavy, 18 to 24 in.	1 50
<i>Ginkgo biloba</i> . 3 to 4 ft.....	2 50
4 to 5 ft.....	3 00
5 to 6 ft.....	3 50
6 to 7 ft.....	4 00
7 to 8 ft.....	5 00
8 to 10 ft.....	6 00
10 to 12 ft.....	7 50
<i>Gordonia alata</i> . 2 to 3 ft.....	3 50
<i>Gymnocladus dioica</i> . 3 to 4 ft.....	1 00
4 to 5 ft.....	1 50
6 to 8 ft.....	2 50
<i>Halesia tetraptera</i> . 2 to 3 ft.....	1 00
3 to 4 ft.....	1 50
5 to 6 ft.....	2 50
<i>Hamamelis vernalis</i> . 4 to 5 ft.....	1 00
6 to 8 ft.....	1 50
<i>H. virginica</i> . 4 to 5 ft.....	75
5 to 6 ft.....	1 00
8 to 10 ft.....	1 50

	Each
<i>Hedera helix</i> . 2-yr.....	\$0 50
<i>H. helix digitata</i> . 2-in. pots.....	25
<i>Hesperaloe parviflora</i> . 2-yr.....	50
3-yr.....	75
4-yr.....	1 00
<i>Hibiscus moscheutos</i> . 1-yr.....	25
2-yr.....	50
<i>H. syriacus coelestis</i> , Single Blue. 2 to 3 ft.....	50
3 to 4 ft.....	75
<i>H. syriacus</i> Seedling, Single Pink. 3 to 4 ft.....	50
4 to 5 ft.....	75
<i>H. syriacus</i> Seedling, Single White. 2 to 3 ft.....	50
<i>H. syriacus</i> , Joan of Arc. Double; white. 3 to 4 ft..	50
<i>H. syriacus</i> , Lucy. Red. 3 to 4 ft.....	75
<i>H. syriacus purpureum semi-plena</i> . Lavender. 2 to 3 ft.....	50
<i>H. syriacus rubra</i> . Red. 3 to 4 ft.....	50
<i>Holodiscus</i> . Ocean Spray. 2 to 3 ft., B&B.....	1 50
<i>Hydrangea arborescens grandiflora</i> . 2 to 3 ft.....	75
<i>H. paniculata grandiflora</i> . 2 to 3 ft.....	75
3 to 4 ft.....	1 00
<i>H. quercifolia</i> . 18 to 24 in.....	75
2 to 3 ft.....	1 00
<i>Hypericum aureum</i> . 2 to 3 ft.....	75
<i>H. calycinum</i> . 1-yr.....	50
2-yr.....	75
<i>H. moserianum</i> . 1-yr.....	50
2-yr.....	75
<i>Ilex cassine</i> . 4 to 5 ft., B&B.....	3 00
5 to 6 ft., B&B.....	4 00
<i>I. cassine angustifolia</i> . 2 to 3 ft., B&B.....	1 50
3 to 4 ft., B&B.....	2 00
5 to 6 ft., B&B.....	5 00
<i>I. cassine myrtifolia</i> . 3 to 4 ft., B&B.....	2 50
5 to 6 ft., B&B.....	4 00
<i>I. cornuta burfordi</i> . 2 ft., B&B.....	2 50
3 ft., B&B.....	3 50
4 to 5 ft., B&B.....	6 00
Large specimens priced on request.	
<i>I. crenata</i> . 18 to 24 in., B&B.....	1 50
2 to 3 ft., B&B.....	2 50
<i>I. crenata convexa</i> . 15 to 18 in., B&B.....	2 50
<i>I. crenata</i> , Spreading. 15 to 18 in., B&B.....	1 50
18 to 24 in., B&B.....	2 00
2 to 2½ ft., B&B.....	3 00
<i>I. crenata rotundifolia</i> . 18 to 24 in., B&B.....	2 50
2 to 3 ft., B&B.....	3 00
<i>I. decidua</i> . 2 to 3 ft., B&B.....	1 50
3 to 4 ft., B&B.....	2 00

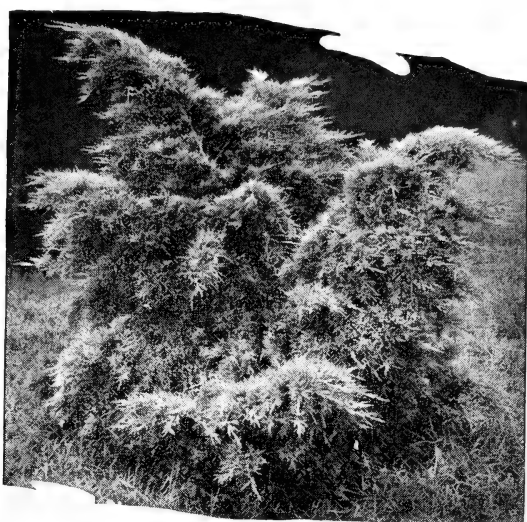


Ilex opaca
(American Holly)
See page 16

	Each
<i>Ilex decidua fraseri.</i> 2 to 3 ft., B&B.....	\$1 50
3 to 4 ft., B&B.....	2 00
4 to 5 ft., B&B.....	2 50
<i>I. glabra.</i> 18 to 24 in., B&B.....	1 50
2 to 3 ft., B&B.....	2 50
<i>I. latifolia.</i> 2 to 3 ft., B&B.....	3 50
3 to 4 ft., B&B.....	5 00
<i>I. opaca.</i> 2 to 3 ft., B&B.....	2 00
3 to 4 ft., B&B.....	2 50
4 ft., B&B.....	3 00
4 to 5 ft., B&B.....	3 50
5 to 6 ft., B&B.....	5 00
Large specimens priced on application.	
<i>I. opaca, East Palatka.</i> 2 to 3 ft., B&B.....	2 50
3 to 4 ft., B&B.....	3 50
4 to 5 ft., B&B.....	5 00
<i>I. opaca howardi.</i> 2 to 3 ft., B&B.....	2 50
3 to 4 ft., B&B.....	3 50
4 to 5 ft., B&B.....	5 00
6 to 8 ft., B&B.....	10 00
Large specimens priced on application.	
<i>I. opaca, Hume No. 2.</i> 4 to 5 ft., B&B.....	4 00
5 to 6 ft., B&B.....	5 00
<i>I. pernyi veitchi.</i> 3 to 5 ft., B&B.....	5 00
<i>I. sieboldi.</i> 2½ to 3 ft., B&B.....	2 00
<i>I. verticillata.</i> 18 to 24 in., B&B.....	1 00
3 to 4 ft., B&B.....	1 50
<i>I. vomitoria.</i> 18 to 24 in., B&B.....	1 50
2 to 2½ ft., B&B.....	2 00
2½ to 3 ft., B&B.....	2 50
3 to 4 ft., B&B.....	3 00
4 to 5 ft., B&B.....	4 00
5 to 6 ft., B&B.....	5 00
6 to 8 ft., B&B.....	7 50
Large specimen plants of many of the above <i>Ilex</i> can be priced on application.	
<i>Itea virginica.</i> 2 to 3 ft.....	1 00
3 to 4 ft.....	1 50
<i>Jasminum floridum.</i> 18 to 24 in.....	50
2½ to 3 ft.....	75
3 to 4 ft.....	1 00
<i>J. nudiflorum.</i> 2 to 3 ft.....	50
3 to 4 ft.....	75
<i>J. stephanense.</i> 2 to 3 ft.....	75



Jasminum nudiflorum

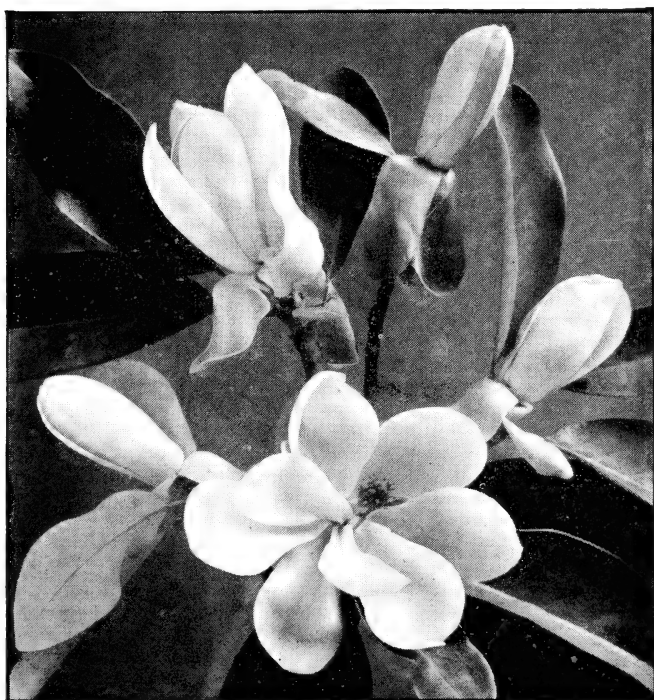


Juniperus pfitzeriana

	Each
Juglans regia. 4 to 5 ft.....	\$1 50
Juniperus chinensis armstrongi. 18 to 24 in., B&B...	2 00
J. chinensis densa glauca. 12 to 18 in., B&B.....	1 50
18 to 24 in., B&B.....	2 00
2 to 3 ft., B&B.....	2 50
J. chinensis excelsa stricta. 12 to 18 in., B&B.....	1 50
18 to 24 in., B&B.....	2 00
2 to 3 ft., B&B.....	2 50
J. chinensis pfitzeriana. 12 to 18 in., B&B.....	1 50
18 to 24 in., B&B.....	2 00
2 to 2½ ft., B&B.....	2 50
2½ to 3 ft., B&B.....	3 00
3 to 4 ft., B&B.....	4 00
J. chinensis pfitzeriana aurea. 18 to 24 in., B&B...	2 00
J. chinensis procumbens. 12 to 18 in., B&B.....	1 50
18 to 24 in., B&B.....	2 00
2 to 3 ft., B&B.....	2 50
J. communis ashfordi. 2 to 3 ft., B&B.....	1 50
3 to 4 ft., B&B.....	2 00
4 to 5 ft., B&B.....	3 00
J. communis depressa. 2 to 3 ft., B&B.....	2 00
J. communis depressa plumosa. 18 to 24 in., B&B..	1 50
2 to 3 ft., B&B.....	2 00
J. communis hibernica. 2 to 3 ft., B&B.....	1 50
3 to 4 ft., B&B.....	2 00
4 to 5 ft., B&B.....	2 50
5 to 6 ft., B&B.....	3 50
J. communis suecica. 2 to 2½ ft., B&B.....	1 50
4 to 5 ft., B&B.....	2 50
J. japonica. 18 to 24 in., B&B.....	1 50
2 to 3 ft., B&B.....	2 50
J. japonica aurea. 12 to 18 in., B&B.....	4 50
J. japonica globosa aurea. 12 to 18 in., B&B.....	4 50
J. virginiana burki. 3 to 4 ft., B&B.....	3 50
4 to 5 ft., B&B.....	5 00
J. virginiana canaerti. 2 to 3 ft., B&B.....	2 50
3 to 4 ft., B&B.....	3 00
4 to 5 ft., B&B.....	3 50
5 to 6 ft., B&B.....	5 00
J. virginiana donaldsoni. 3 to 4 ft., B&B.....	3 50
J. virginiana glauca. 3 to 4 ft., B&B.....	3 50

	Each
<i>Juniperus virginiana globosa</i> . 18 to 24 in., B&B....	\$3 50
<i>J. virginiana keteleeri</i> . 3 to 4 ft., B&B.....	3 00
<i>J. virginiana schottii</i> . 3 to 4 ft. B&B.....	3 00
<i>J.</i> , Waukegan. 12 to 18 in., B&B.....	1 50
18 to 24 in., B&B.....	2 00
2 to 3 ft., B&B.....	2 50
<i>Kœlreuteria paniculata</i> . 4 to 5 ft.....	1 50
6 to 8 ft.....	2 50
<i>Kolkwitzia amabilis</i> . 2 to 3 ft.....	75
5 to 6 ft.....	1 50
6 to 8 ft.....	2 00
<i>Lagerstrœmia indica alba</i> . 3 to 4 ft., B&B.....	1 50
<i>L. indica</i> , Light Pink. 3 to 4 ft., B&B.....	1 00
<i>L. indica purpurea</i> . 3 to 4 ft., B&B.....	1 50
<i>L. indica rosea</i> . 3 to 4 ft., B&B.....	1 00
4 to 5 ft., B&B.....	1 50
5 to 6 ft., B&B.....	2 00
<i>L. indica</i> , William Toovey. 3 to 4 ft., B&B.....	1 00
4 to 5 ft., B&B.....	1 50
5 to 6 ft., B&B.....	2 00
<i>Larix kaempferi</i> . 5 to 6 ft.....	1 50
<i>Laurocerasus carolinana</i> . 2 to 3 ft., B&B.....	1 50
3 to 4 ft., B&B.....	2 00
4 to 5 ft., B&B.....	2 50
5 to 6 ft., B&B.....	3 50
<i>L. rotundifolia</i> . 18 to 24 in., B&B.....	2 00
2 to 2½ ft., B&B.....	2 50
2½ to 3 ft., B&B.....	3 50
3 to 4 ft., B&B.....	5 00
<i>L. schipkaensis</i> . 18 to 24 in., B&B.....	2 00
2 to 2½ ft., B&B.....	2 50
<i>L.</i> , Strap-Leaf. 12 to 18 in., B&B.....	2 50
18 to 24 in., B&B.....	3 50
<i>L.</i> , Howard Hickory. 12 to 18 in., B&B.....	1 50
18 to 24 in., B&B.....	2 00
2 to 3 ft., B&B.....	2 50
<i>Lespedeza bicolor</i> . 2 to 3 ft.....	75
<i>L. formosa</i> . 2-yr.....	50
3-yr.....	75
<i>L. penduliflora</i> . 2 to 3 ft.....	75
<i>Libocedrus decurrens</i> . A few large specimens priced on application.	
<i>Ligustrum lucidum</i> . 18 to 24 in., B&B.....	1 50
2 to 2½ ft., B&B.....	2 00
2½ to 3 ft., B&B.....	2 50
3 to 4 ft., B&B.....	3 50
<i>L. ovalifolium variegatum</i> . 12 to 18 in.....	1 00
2½ to 3 ft.....	2 00
<i>L. quihoui</i> . 3 to 4 ft.....	75
<i>L. sinense</i> . 18 to 24 in.....	\$5.00 per 100
<i>L. sinense pendula</i> . 2 to 3 ft.....	75
<i>Liquidambar styraciflua</i> . 8 to 10 ft., B&B.....	5 00
10 to 12 ft., B&B.....	7 50
<i>Liriodendron tulipifera</i> . 5 to 6 ft., B&B.....	2 50
<i>Lonicera browni</i> . 18 to 24 in.....	50
3 to 4 ft.....	75
<i>L. fragrantissima</i> . 2 to 3 ft.....	50
3 to 4 ft.....	75
4 to 5 ft.....	1 00
<i>L. heckrotti</i> . 18 to 24 in.....	50
2 to 3 ft.....	75
Large.....	1 00
<i>L. japonica halliana</i> . 2-yr.....	50

	Each
<i>Lonicera morrowi</i> . 18 to 24 in.....	\$0 50
2 to 2½ ft.....	75
4 to 5 ft.....	1 00
<i>L. nitida</i> . 15 to 18 in., B&B.....	1 50
<i>L. sempervirens</i> . 2-yr.....	50
3-yr.....	75
<i>L. speciosa</i> . 3 to 4 ft.....	75
4 to 5 ft.....	1 00
<i>L. tatarica</i> . 3 to 4 ft.....	75
<i>L. tatarica lutea</i> . 18 to 24 in.....	75
<i>L. tatarica rosea</i> . 3 to 4 ft.....	75
<i>Loropetalum chinense</i> . A few fine specimens.....	5 00
<i>Lycium chinense</i> . 3 to 4 ft.....	75
<i>Maackia amurensis</i> . 4 to 5 ft.....	1 50
6 to 8 ft.....	2 50
8 to 10 ft.....	3 50
<i>Magnolia acuminata</i> . 2 to 3 ft.....	1 00
4 to 5 ft.....	1 50
Large, fine specimens, heavy caliper, priced on application.	
<i>M. glauca</i> . 2 to 3 ft., B&B.....	1 50
3 to 4 ft., B&B.....	2 00
4 to 5 ft., B&B.....	2 50
5 to 6 ft., B&B.....	3 00
6 to 8 ft., B&B.....	3 50
<i>M. glauca</i> , Evergreen Type. 5 to 6 ft., B&B.....	3 50
<i>M. grandiflora</i> . 2 to 2½ ft., B&B.....	1 50
3 to 4 ft., B&B.....	2 50
4 to 5 ft., B&B.....	3 50
Large specimens priced on application.	



Magnolia glauca

	Each
<i>Magnolia kobus</i> . 6 to 8 ft., B&B.....	\$5 50
8 to 10 ft., B&B.....	7 50
<i>M. macrophylla</i> . 2 to 3 ft.....	2 50
5 to 6 ft.....	4 00
8 to 10 ft.....	7 50
<i>M. purpurea</i> . 2 to 3 ft., B&B.....	1 50
3 to 4 ft., B&B.....	2 00
4 to 5 ft., B&B.....	3 50
5 to 6 ft., B&B.....	5 00
6 to 8 ft., B&B.....	7 50
Large specimens priced on application.	
<i>M. soulangeana</i> . 2 to 3 ft., B&B.....	3 00
3 to 4 ft., B&B.....	4 00
<i>M. stellata</i> . 2 to 3 ft., B&B.....	3 00
3 to 4 ft., B&B.....	4 00
4 to 5 ft., B&B.....	6 00
Larger specimens priced on application.	
<i>M. tripetala</i> . 2 to 3 ft.....	1 50
3 to 4 ft.....	2 00
<i>Mahonia aquifolium</i> . 18 to 24 in., B&B.....	1 50
2 to 3 ft., B&B.....	2 00
<i>M. bealei</i> . 12 to 18 in., B&B.....	2 00
18 to 24 in., B&B.....	2 50
2 to 3 ft., B&B.....	3 00
<i>M. pinnata (fascicularis)</i> . 18 to 24 in., B&B.....	2 50
2 to 3 ft., B&B.....	3 00
<i>Malus angustifolia</i> . 5 to 6 ft.....	1 50
<i>M. arnoldiana</i> . 8 to 10 ft.....	3 50
<i>M. atrosanguinea</i> . Deep carmine. 6 to 8 ft.....	2 50
<i>M. baccata</i> . 6 to 8 ft.....	2 50
<i>M. bechteli</i> . Pink, rose-like blooms. 3 to 4 ft.....	2 00
4 to 5 ft.....	3 50
<i>M. coronaria</i> . 6 to 8 ft.....	2 50
<i>M. eleyi</i> . Red. Very choice. 6 to 8 ft.....	2 50
<i>M. floribunda</i> . Bright pink flowers shading to white.	
6 to 8 ft.....	2 50
<i>M. hopa</i> . 6 to 8 ft.....	2 50
<i>M. micromalus</i> . 6 to 8 ft.....	2 50
<i>M. niedzwetzkyana</i> . Deep pink flowers. 6 to 8 ft...	2 50
<i>M. prunifolia rinki</i> . Pink flowers. 6 to 8 ft.....	2 50
<i>M. sargentii</i> . 2 to 3 ft.....	2 00
<i>M. scheideckeri</i> . Double reddish pink flowers.	
5 to 6 ft.....	2 50
<i>M. sieboldi</i> . Blush-pink flowers. 6 to 8 ft.....	2 50
<i>M. subridi</i> . 5 to 6 ft.....	2 50
<i>M. toringoides</i> . 4 to 5 ft.....	2 00
<i>Meratia præcox</i> . 2 to 3 ft.....	1 00
<i>Myrica cerifera</i> . 2 to 3 ft.....	2 00
<i>Nandina domestica</i> . 12 to 15 in., B&B.....	75
15 to 18 in., B&B.....	1 00
2 to 3 ft., B&B.....	1 50
3 to 4 ft., B&B.....	2 50
4 to 5 ft., B&B.....	4 00
<i>Neviusia alabamensis</i> . 18 to 24 in.....	75
Ocean Spray. See <i>Holodiscus</i> .	
<i>Ophiopogon</i> . 3-yr.....	50
<i>Osmanthus americanus</i> . 3 to 4 ft., B&B.....	3 50
<i>O. aquifolium</i> . 18 to 24 in., B&B.....	2 00
2 to 3 ft., B&B.....	3 00
3 to 4 ft., B&B.....	3 50
<i>Phellodendron sachalinense</i> . 6 to 8 ft.....	2 50
<i>Philadelphus coronarius</i> . 3 to 4 ft.....	75
<i>P. cymosus</i> , Norma. 2 to 3 ft.....	75
<i>P. lemoinei</i> , Avalanche. 18 to 24 in.....	50
<i>P. virginialis</i> . 2 to 3 ft.....	75
3 to 4 ft.....	1 00



Nandina domestica

	Each
Photinia glabra. 2 to 3 ft., B&B.....	\$1 50
P. serrulata. 2 to 3 ft., B&B.....	2 00
3 to 4 ft., B&B.....	2 50
P. villosa. 4 to 5 ft., B&B.....	2 00
Picea conica glauca. 18 to 24 in., B&B.....	3 00
2 to 3 ft., B&B.....	5 00
P. excelsa. 18 to 24 in., B&B.....	1 50
2 to 3 ft., B&B.....	2 00
8 to 10 ft., B&B.....	20 00
P. omorika. 18 to 24 in., B&B.....	2 50
2½ to 3 ft., B&B.....	3 50
P. orientalis. 18 to 24 in., B&B.....	2 00
2 to 3 ft., B&B.....	3 00
P. pungens kosteriana. 2 to 2½ ft., B&B.....	5 00
3 to 4 ft., B&B.....	7 50
Pieris japonica. 12 to 15 in., B&B.....	2 00
15 to 18 in., B&B.....	2 50
18 to 24 in., B&B.....	3 00
2 to 2½ ft., B&B.....	4 00
Pinus mughus. 12 to 18 in., B&B.....	1 50
18 to 24 in., B&B.....	2 50
P. nigra. 2 to 3 ft., B&B.....	1 50
5 to 6 ft., B&B.....	4 00
P. ponderosa. 3 to 4 ft., B&B.....	3 50
5 to 6 ft., B&B.....	5 00
P. resinosa. 6 to 8 ft., B&B.....	5 00
P. strobus. 2 to 3 ft., B&B.....	1 50
3 to 4 ft., B&B.....	2 00
4 to 5 ft., B&B.....	3 00
P. sylvestris. 5 to 6 ft., B&B.....	3 50
6 to 8 ft., B&B.....	5 00
8 to 10 ft., B&B.....	7 50
P. tanyosho. 18 to 24 in., B&B.....	3 50
Specimens priced on application.	
P. thunbergi. 6 to 8 ft., B&B.....	5 00
8 to 10 ft., B&B.....	10 00
Polygonum auberti. 2-yr.....	50

	Each
<i>Populus nigra italica</i> . 2 to 3 ft.....	\$0 25
4 to 6 ft.....	50
6 to 8 ft.....	75
8 to 10 ft.....	1 50
<i>Potentilla fruticosa</i> . 2 to 3 ft.....	75
<i>Prunus</i> , Amanogawa. Flowering Cherry. Semi-double, pale pink flowers. 5 to 6 ft.....	3 50
<i>P. autumnalis</i> . Flowering Cherry.....	\$2.50 and 3 50
<i>P.</i> , Beni-higan. Flowering Cherry. Pale pink flowers. 5 to 6 ft.....	3 50
7 to 8 ft.....	5 00
<i>P. blireana</i> . Flowering Plum. Brilliant double pink flowers. Bronzy leaf. 5 to 6 ft.....	2 50
<i>P. cerasifera pissardi</i> . Purple-leaf Plum. Pink flowers. 3 to 4 ft.....	1 50
4 to 5 ft.....	2 00
6 to 7 ft.....	3 00
<i>P. glandulosa rosea</i> . Pink-flowering Almond. 18 to 24 in.....	75
2 to 2½ ft.....	1 00
<i>P.</i> , Kwanzan. Flowering Cherry. Deep pink, very double flowers. 4 to 5 ft.....	2 50
6 to 8 ft.....	3 50
8 to 10 ft.....	5 00
<i>P.</i> , Mount Fuji. Flowering Cherry. Double white flowers. 4 to 5 ft.....	3 50
5 to 6 ft.....	5 00
<i>P.</i> , Naden. Flowering Cherry. Pale pink, semi-double flowers. 2 to 3 ft.....	1 50
3 to 4 ft.....	2 50
4 to 5 ft.....	3 50



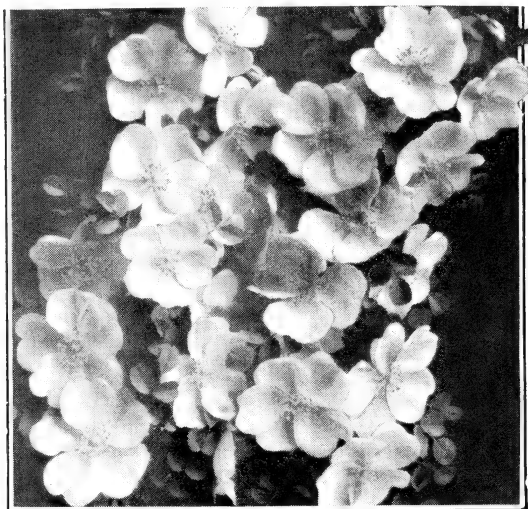
Prunus, Kwanzan (Flowering Cherry)

	Each
Prunus, Othello. Purple-Leaf Plum. 2 to 3 ft.....	\$1 00
3 to 4 ft.....	1 50
4 to 5 ft.....	2 00
P. persica alba. White-flowering Peach. 2 to 3 ft...	75
3 to 4 ft.....	1 00
5 to 6 ft.....	2 50
P. persica rosea. Pink-flowering Peach. 2 to 3 ft...	75
3 to 4 ft.....	1 00
P. persica rubra. Red-flowering Peach. 2 to 3 ft...	75
3 to 4 ft.....	1 00
P., Shiro-fugen. Flowering Cherry. Flowers pink in bud changing to white as they expand.	
5 to 6 ft.....	3 50
6 to 8 ft.....	5 00
P. subhirtella pendula. Double-flowering Weeping Cherry. Pink flowers. Top budded. 5 to 7 ft..	3 50
P., Takasago. Flowering Cherry. 2 to 3 ft.....	1 50
3 to 4 ft.....	2 00
4 to 5 ft.....	3 00
5 to 6 ft.....	4 00
P. triloba. Double-flowering Plum. White flowers. 5 to 6 ft.....	2 50
P., Yoshino. Flowering Cherry. Pale pink flower, center being stained with purplish pink before they fall. 4 to 5 ft.....	2 50
5 to 6 ft.....	4 00
6 to 8 ft.....	5 00
Pterocarya rhoifolia. 4 to 5 ft.....	1 00
5 to 6 ft.....	1 50
Pueraria thunbergiana. Kudzu Vine. 2-yr.....	50
Large plants.....	1 00
Punica granatum. 2 to 3 ft.....	1 00



Pyracantha coccinea lalandi

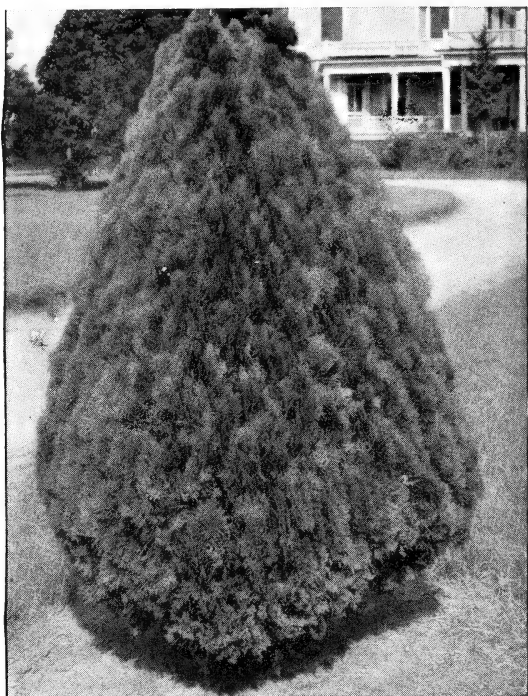
Pyracantha coccinea boundsi. Large pots.....	1 00
18 to 24 in., B&B.....	1 00
2 to 3 ft., B&B.....	2 00
P. coccinea lalandi. Large pots.....	1 00
18 to 24 in., B&B.....	1 00
2 to 3 ft., B&B.....	1 50
3 to 4 ft., B&B.....	2 00



Rosa hugonis

	Each
Quercus alba. 5 to 6 ft.....	\$2 00
Q. borealis. 6 to 8 ft.....	2 50
8 to 10 ft.....	3 50
Q. laurifolia. 10 to 12 ft.....	3 50
Q. palustris. 5 to 6 ft.....	2 00
6 to 8 ft.....	2 50
8 to 10 ft.....	3 00
Rhamnus caroliniana. 6 to 8 ft.....	2 50
R. cathartica. 5 to 6 ft.....	1 00
R. dahurica. 3 to 4 ft.....	1 50
Rhodotypos kerrioides. 2 to 3 ft.....	50
3 to 4 ft.....	75
4 to 5 ft.....	1 00
Rhus canadensis. 5 to 6 ft.....	1 50
R. cotinoides. 6 to 8 ft.....	1 50
R. cotinus. 4 to 5 ft.....	1 50
5 to 6 ft.....	2 00
R. typhina laciniata. Dwarf Staghorn Sumac.	
2 to 3 ft.....	1 50
3 to 4 ft.....	2 00
4 to 5 ft.....	2 50
Robinia hispida. 3 to 4 ft.....	75
Rosa, Climbing Gardenia.....	50
R., Climbing Jacotte.....	50
R., Climbing Mme. Gregoire Staechelin.....	50
R., Climbing Mary Wallace.....	50
R., Paul's Scarlet Climber.....	50
R. hugonis. 2 to 3 ft.....	75
3 to 4 ft.....	1 00
4 to 5 ft.....	1 25
R., Old-fashioned Moss. 18 to 24 in.....	75
R. polyantha in variety.....	75
R. rouletti. Rock-garden Rose. 2-yr.....	50
R. rugosa. Red, Pink, and White. 2 to 3 ft.....	75
R. wichuraiana.....	50
Salix annularis. 5 to 6 ft.....	1 00
S. babylonica. 6 to 8 ft.....	1 00
8 to 10 ft.....	1 50
S. caprea. 4 to 5 ft.....	1 00
6 to 8 ft.....	1 50

	Each
<i>Salix matsudana</i> . 3 to 4 ft.....	1 00
4 to 5 ft.....	1 50
6 to 8 ft.....	2 50
8 to 10 ft.....	3 50
<i>S. purpurea nana</i> . 2 to 3 ft.....	1 00
<i>S. vitellina pendula</i> . 6 to 8 ft.....	1 50
8 to 10 ft.....	2 50
<i>Sambucus nigra aurea</i> . 4 to 5 ft.....	75
5 to 6 ft.....	1 00
<i>Sciadopitys verticillata</i> . 12 to 15 in., B&B.....	2 50
Larger specimens priced on application.	
<i>Smilax laurifolia</i> . 3-in. pots.....	1 00
<i>Spiræa aitchisoni</i> . 2 to 3 ft.....	75
3 to 4 ft.....	1 00
4 to 5 ft.....	1 50
<i>S. billiardi</i> , Pink. 3 to 4 ft.....	75
<i>S. bumalda</i> , Anthony Waterer. 18 to 24 in.....	50
2 to 3 ft.....	75
<i>S. opulifolia</i> . 3 to 4 ft.....	75
4 to 5 ft.....	1 00
<i>S. prunifolia</i> . 2 to 3 ft.....	50
3 to 4 ft.....	75
4 to 5 ft.....	1 00
<i>S. reevesiana</i> . 2 to 3 ft.....	75
<i>S. thunbergi</i> . 18 to 24 in.....	50
2 to 3 ft.....	75
<i>S. trichocarpa</i> . 3 to 4 ft.....	75
<i>S. vanhouttei</i> . 2 to 3 ft.....	50
3 to 4 ft.....	75
<i>Stephanandra flexuosa</i> . 2 to 3 ft.....	75
<i>Sterculia platanifolia</i> . 2 to 3 ft.....	1 00
3 to 4 ft.....	1 50
4 to 5 ft.....	2 00
5 to 6 ft.....	2 50
7 to 8 ft.....	3 00
8 to 10 ft.....	3 50
10 to 12 ft.....	5 00
<i>Stewartia pentagyna</i> . 2 to 2½ ft., B&B.....	2 50
<i>S. pseudocamellia</i> . 4 to 6 ft., B&B.....	2 50
6 to 8 ft., B&B.....	3 50
<i>S. virginica</i> . 3 to 4 ft., B&B.....	2 50
<i>Styrax japonica</i> . 2 to 3 ft.....	1 00
3 to 4 ft.....	1 50
4 to 5 ft.....	2 00
8 to 10 ft.....	3 50
<i>Symphoricarpos albus</i> . 2 to 3 ft.....	75
<i>S. chenaulti</i> . 2 to 3 ft.....	75
<i>S. vulgaris</i> . 2 to 3 ft.....	50
<i>Syringa</i> . French Hybrid Lilacs.	
Best Blue Single. 2 to 3 ft.....	1 00
3 to 4 ft.....	1 50
Charles Joly. 18 to 24 in.....	1 00
Charles Tenth. 2 to 3 ft.....	1 00
Guizot. 5 to 6 ft.....	2 00
Lamartine. 3 to 4 ft.....	1 25
5 to 6 ft.....	2 00
Ludwig Spaeth. 2 to 3 ft.....	1 00
Mme. Casimir Perier. 2 to 3 ft.....	1 00
3 to 4 ft.....	1 50
Mme. de Miller. 3 to 4 ft.....	1 00
President Grevy. 3 to 4 ft.....	1 50
President Roosevelt. 18 to 24 in.....	1 00
Stadtgartner Rothpletz. 2 to 2½ ft.....	1 50
Vauban. 2 to 3 ft.....	1 00
<i>S. persica</i> . Purple. 3 to 4 ft.....	1 00
<i>S. rothomagensis</i> , Lilac.....	1 00
3 to 4 ft.....	1 50



Thuja orientalis aurea nana

	Each
<i>Syringa rothomagensis</i> , Sulte. Pinkish lilac flowers.	
2 to 3 ft.	\$1 00
3 to 4 ft.	1 50
4 to 5 ft.	2 00
<i>S. villosa</i> . Lilac flowers. 3 to 4 ft.	1 00
<i>Tamarix africana</i> . 3 to 4 ft.	75
4 to 5 ft.	1 00
<i>Taxodium distichum</i> . 6 to 8 ft., B&B.	3 50
<i>Thea sinensis bohea</i> . 2 to 3 ft., B&B.	2 00
3 to 4 ft., B&B.	3 00
4 to 5 ft., B&B.	5 00
<i>Thuja occidentalis</i> . 18 to 24 in., B&B.	1 50
<i>T. occidentalis globosa</i> . 12 to 18 in., B&B.	1 50
18 to 24 in., B&B.	2 00
<i>T. occidentalis hoveyi</i> . 2 to 3 ft., B&B.	2 00
4 to 5 ft., B&B.	3 50
<i>T. occidentalis plicata pyramidalis</i> . 18 to 24 in., B&B.	1 50
<i>T. occidentalis pyramidalis</i> . 2 to 3 ft., B&B.	1 50
3 to 4 ft., B&B.	2 00
4 to 5 ft., B&B.	3 00
<i>T. occidentalis reidi</i> . 15 to 18 in., B&B.	1 00
2 to 3 ft., B&B.	1 50
3 to 4 ft., B&B.	2 50
<i>T. occidentalis</i> Seedlings. 3 to 4 ft., B&B.	1 50
4 to 5 ft., B&B.	2 00
<i>T. occidentalis wareana</i> . 18 to 24 in., B&B.	1 50
2 to 2½ ft., B&B.	2 00
3 to 4 ft., B&B.	3 50
<i>T. occidentalis woodwardi</i> . 10 to 12 in., B&B.	1 50
<i>T. orientalis aurea nana</i> . 12 to 15 in., B&B.	1 00
15 to 18 in., B&B.	1 50
18 to 24 in., B&B.	2 00
2 to 3 ft., B&B.	2 50
<i>T. orientalis aurea conspicua</i> . 5 to 6 ft., B&B.	3 00

	Each
<i>Thuja orientalis excelsa</i> . 18 to 24 in., B&B.....	\$1 50
2 to 3 ft., B&B.....	2 00
3 to 4 ft., B&B.....	2 50
4 to 5 ft., B&B.....	3 50
<i>T. orientalis globosa aurea nana</i> . 18 to 24 in., B&B.	2 00
<i>Tilia americana</i> . 10 to 12 ft.....	3 50
<i>Tsuga canadensis</i> . 18 to 24 in., B&B.....	2 00
2 to 2½ ft., B&B.....	2 50
<i>T. caroliniana</i> . 3 to 4 ft., B&B.....	3 00
4 to 5 ft., B&B.....	4 00
5 to 6 ft., B&B.....	5 00
<i>T. sargentii</i> . Weeping Hemlock. Specimens. \$5.00 to	20 00
<i>Ulmus pumila</i> . 6 to 8 ft.....	2 50
8 to 10 ft.....	3 50
<i>Viburnum burkwoodii</i> . 18 to 24 in., B&B.....	2 50
2 to 3 ft., B&B.....	3 50
<i>V. carlesii</i> . 18 to 24 in., B&B.....	2 50
2 to 3 ft., B&B.....	3 50
<i>V. cassinoides</i> . 2 to 3 ft.....	75
3 to 4 ft.....	1 00
<i>V. dentatum</i> . 3 to 4 ft.....	75
4 to 5 ft.....	1 00
<i>V. lantana</i> . 5 to 6 ft.....	1 25
<i>V. opulus</i> . 2 to 3 ft.....	75
3 to 4 ft.....	1 00
<i>V. opulus sterile</i> . 3 to 4 ft.....	75
4 to 5 ft.....	1 00
<i>V. rhytidophyllum</i> . 18 to 24 in., B&B.....	1 50
2 to 3 ft., B&B.....	2 00
3 to 4 ft., B&B.....	2 50
4 to 5 ft., B&B.....	3 50
5 to 6 ft., B&B.....	5 00
<i>V. tomentosum</i> . 2 to 3 ft.....	75
3 to 4 ft.....	1 00
4 to 5 ft.....	1 50
<i>V. tomentosum plicatum</i> . 2 to 3 ft.....	75
3 to 4 ft.....	1 00
4 to 5 ft.....	1 50
Larger specimens priced on application.	
<i>V. setigerum</i> . 4 to 5 ft.....	5 00
<i>Vinca major</i> . 2-yr.....	25
<i>V. minor</i> . 2-yr.....	25
<i>V. minor alba</i> . 2-yr.....	25
<i>Vitex agnus castus</i> . 2 to 3 ft.....	75
3 to 4 ft.....	1 00
4 to 5 ft.....	1 25
<i>V. macrophylla</i> . 3 to 4 ft.....	1 00
4 to 5 ft.....	1 25
Water-Lilies. Pink.....	1 00
<i>Weigela, Eva Rathke</i> . 2 to 3 ft.....	75
<i>W. hendersonii</i> . 2 to 3 ft.....	75
<i>W., Heroine</i> . 2 to 3 ft.....	1 00
3 to 4 ft.....	1 50
<i>W. rosea</i> . 2 to 3 ft.....	50
3 to 4 ft.....	75
4 to 5 ft.....	1 00
<i>Wisteria, American</i> . 18 to 24 in.....	75
2 to 3 ft.....	1 00
<i>W. multijuga, Purple</i> . 2 to 3 ft.....	2 50
<i>W. multijuga, White</i> . 2 to 3 ft.....	2 50
<i>W. sinensis</i> . Grafted blooming plants. 2-yr.....	1 50
3-yr.....	2 50
<i>W. sinensis, White</i> . Good bloomer.....	1 50
<i>Yucca filamentosa</i> . 2-yr.....	25
4-yr.....	50
<i>Zanthoxylum schinifolium</i> . 2 to 3 ft.....	1 00
<i>Zelkova serrata</i> . 8 to 10 ft.....	3 50

PERENNIALS

All Perennials 25 cts. each, \$2.50 per doz.,
unless otherwise noted

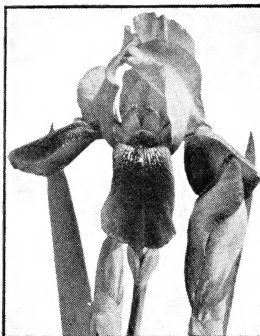
- Achillea filipendulina.*
A. millefolium rosea.
A. tomentosa.
A. tomentosa alba.
Aconitum fischeri.
A., Sparks Variety.
Actinea herbacea.
Ajuga reptans.
Alyssum rostratum.
A. saxatile compactum.
Amaryllis Johnsoni. 50 cts.
 each.
A., Red.
Amsonia tabernæmontana.
Anchusa italica, Dropmore.
A. myosotidiflora.
A. officinalis.
Anemone, St. Brigid.
 (Spring-flowering.)
A. alba. (Fall-flowering.)
A., Queen Charlotte.
 (Fall-flowering.)
A. pulsatilla.
 (Spring-flowering.)
A. rubra flore-pleno.
A., September Queen.
Anthemis Aizoon.
A. tinctoria.
Aquilegia, Double.
A. flabellata nana-alba. 50
 cts. each.
A., Long-spurred Hybrids.
Arabis alpinus.
Armeria.
Artemisia, Dwarf.
A. lactiflora.
A., Silver King.
Asclepias tuberosa.
- Aster alpinus ruber.*
A., Amethyst.
A., Daphne.
A. frikarti. 50 cts. each.
A., Mauve Cushion.
A., Mount Everest.
A. novæ-angliæ.
Astilbe gloria superba.
A., Peach Blossom.
A., Salmon Queen.
Aubrietia deltoides.
Balm, Garden.
Baptisia australis.
Begonia, Hardy.
Boltonia asteroides.
Cactus, Prickly Pear.
Callirhoe involucrata.
Campanula persicifolia.
C. pyramidalis.
C. rotundifolia.
Carnation, Mixed.
Centaurea dealbata.
C. macrocephala. 50 cts.
 each.
Cerastium tomentosum.
Ceratostigma plumbagi-
noides.
Chelone lyoni.
Chrysoboltonia pulcherrima.
Chrysanthemum balsamita.
 Costmary.
Chrysanthemum, Bronze.
C., Cushion, Clara Curtis.
C., Cushion, Little Bob.
C., Cushion, Pink.
C., Cushion, Red.
C., Field of Gold.



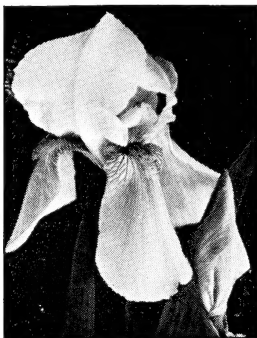
Chrysanthemum

All Perennials 25 cts. each, \$2.50 per doz.,
unless otherwise noted

- Chrysanthemum, Fred Peale.
C., Korean, Large White.
C., Korean, Light Pink.
C., Korean, Dark Pink.
C., Korean, Mars.
C., Lavender.
C., Lemon-Yellow.
C., Mrs. H. Harrison.
C., Old-fashioned Double Red.
C., Orange-Yellow.
C., Red Doty.
C., Single Bronze.
C., Small Pink. Flowers in clusters.
C., White Seedling.
C., White, Yellow Center.
C., Yellow Button.
C., Yellow Seedling.
Clematis heracleæfolia.
C. integrifolia cærulea.
Convallaria majalis.
Coreopsis grandiflora.
Coronilla cappadocica.
- Delphinium chinense.
Dianthus cæsius.
D. deltoides, Pink.
D. deltoides, White.
D. heddegi.
D. knappi.
D. plumarius.
D. plumarius, Double, Mixed.
D. plumarius, Double White.
D. plumarius, Essex Witch.
Dicentra eximia.
D. spectabilis. 50 cts. each.
Digitalis.
Doronicum clusi.
D. pardalianches.
- Echinops ritro.
Edraianthus dalmaticus.
Epimedium macranthum.
Erica vulgaris alba minor.
E., Winter Beauty.
Erigeron alpinus.
Eupatorium cœlestinum.
Euphorbia corollata.
E. myrsinites.
- Ferns.
Festuca glauca.
- Gaillardia grandiflora.
G., Sun God.
Geranium maculatum.
Gout Weed.
Gypsophila paniculata.
G. repens, Rosy Veil.
- Helenium autumnale subperbum.
Heliopsis.
- Hemerocallis, Ajax. 50 cts. each.
H. aurantiaca.
H., Bay State.
H., Cinnabar. 50 cts. each.
H., Cressida. 50 cts. each.
H., D. D. Wyman. 50 cts. each.
H., Doby.
H., Dr. Regel.
H., Early.
H., Early Small Orange.
H. flava.
H., Fordham.
H. fulva maculata. 50 cts. each.
H., Gypsy.
H., Hyperion. 50 cts. each.
H., J. A. Crawford. 50 cts. each.
H. kwanso.
H., Lemona.
H., Margaret Perry. 50 cts. each.
H., Mrs. W. H. Wyman.
H., Patricia. 50 cts. each.
H., Rajah. 50 cts. each.
H., The Gem.
H. thunbergi.
Heuchera, Queen of Hearts. 50 cts. each.
H. rosamondi.
H. sanguinea.
Hollyhock, Newport Pink.
Hosta lanceolata.
H. lanceolata alba.
H. lanceolata, Late.
H. lanceolata, Leaf Variegated around Edge. 50 cts. each.
H. lanceolata variegata.
H. minor alba.
H. subcordata.
Hypericum reptans.
- Iberis, Little Gem.
I. sempervirens.
I., Snowball.
Inula ensifolia.
Iris germanica. German Iris.
Ambassadeur.
Andrew Jackson.
Asia.
Beacon.
Beau Sabreur.
Black Wings.
Blue Banner.
Blue Beard.
Bounty.
Cardinal.
Chromylla.
Corrida.
Dauntless.
Desert Gold.
Dolly Madison.
Freida Mohr.



Ambassadeur Iris



Lord of June Iris

PERENNIALS, continued

All Perennials 25 cts. each, \$2.50 per doz.
unless otherwise noted

Iris Germanica, continued

- Gold Imperial.
- Gray Hussar.
- Hermitage.
- Japanese, Purple. 50 cts. each.
- Japanese, White. 50 cts. each.
- Labor.
- La Neige.
- Lord of June.
- Mary Geddes. 50 cts. each.
- Midnight.
- Mildred Presby.
- Moonlight.
- Morning Glory.
- Morning Splendor.
- Orange Queen.
- Queen of May.
- Red Cloud.
- Rob Roy.
- Rose Dominion.
- Sea Dawn.
- Selene.
- Shekinah.
- Siberian, Purple.
- Siberian, White.
- Souvenir de Mme. Gaudichau.
- Spanish.
- Tokay.
- True Delight.
- Violet Queen.
- Yellow.
- I. orientalis, Yellow.
- I. pumila.
- I. reticulata.
- I. tectorum.
- Lantana, Hardy.
- Lavandula vera.
- Liatris, Late.
- L., September Glory.
- L., White.
- Lilium regale. 50 cts. each.
- L. sargentii.

- Lilium tenuifolium.
- L. tigrinum.
- Linum alpinus. 50 cts. each.
- L. perenne.
- Liriope.
- Lobelia cardinalis.
- Lotus corniculatus.
- Lychnis alpinus.
- L. haageana.
- L. viscaria splendens.
- Lycoris. 50 cts. each.
- Lysimachia nummularis.
- Lythrum roseum superbum.
- Matricaria parthenoides.
- Mazus reptans.
- Mentha, Orange.
- M. pulegium. Pennyroyal.
- M. rotundifolia.
- Mertensia virginica.
- Monarda, Blue.
- M. didyma.
- Nepeta mussini.
- N., Six Hills Giant.
- Nierembergia gracilis.
- N., Tall.
- Oenothera missouriensis.
- Ophiopogon gracilis.
- O. jaburan.
- O. jaburan, Light Blue.
- O. jaburan variegata.
- Pachysandra terminalis.
- Papaver orientalis.
- P., Apricot Queen. 50 cts. each.
- P., Cerise Beauty. 50 cts. each.
- P., Mrs. Perry. 50 cts. each.
- P., Olympia. 50 cts. each.
- P., Spotless. 50 cts. each.
- Pennisetum.
- Pentstemon barbatus.
- P., Garnet.
- P., Purple.
- Peony, Red. 50 cts. each.
- P., White. 50 cts. each.

All Perennials 25 cts. each, \$2.50 per doz.,
unless otherwise noted

- Phlox decussata. Tall-growing Phlox.
Blue Boy.
Countess Zeppelin.
Daily Sketch.
Dr. Klemm.
E. I. Farrington.
Flash.
Harvest Fire.
Lilian.
Mary Louise.
Miss Lingard.
Miss Jenkins.
Michael Buchner.
Rheinlander.
R. P. Struthers.
Richard Wallace.
Thor.
Phlox, Creeping.
P. amœna.
P. subulata.
P. subulata alba.
P. subulata, Apple Blossom.
P. subulata, Apple Blossom,
Dark Pink.
P. subulata, Asheville Blue.
P. subulata atropurpurea.
P. subulata lilacina.
P. subulata, Lodd.
P. subulata rosea.
P. subulata, Improved.
P. subulata sylvestris.
P. subulata vivida.
Phlox, Native.
P. divaricata.
P. divaricata rosea.
Physalis gigantea.
Physostegia vivida.
Platycodon grandiflorum.
Primrose, Mexican.
P., Tall Yellow.
P., Yellow.
P., Polyantha, Mixed.
P., White.
Prunella grandiflora rosea.
Pulmonaria angustifolia cœrulea.
Pyrethrum.
Radicula armoracia. Horse-radish.
Ranunculus repans.
Rosmarinus officinalis.
Rudbeckia laciniata. Golden Glow.
R. maxima.
R. newmani.
R. purpurea.
Ruta. Rue.
Salvia azurea.
S. farinacea.
S. greggi.
S. officinalis.
Sanguinaria canadensis.
Santolina chamæcyparissus.
Sarsaparilla Vine.
Saxifraga megasea Hybrids.
S. tomentosum.
Scabiosa.
Sedum acre.
S. album.
S. blue.
S. dasyphyllum.
S. gracile.
S. glaucum.
S. kamschaticum.
S. obtusatum.
S. seiboldi.
S. sexangulare.
S. spectabilis.
S. spectabilis, Brilliant.
Shasta Daisy.
Alaska.
Double.
Estelle Reed.
Mt. Shasta.
Phyllis Elliott.
Spiræa filipendula.
Statice latifolia.
Stokesia, Blue Moon.
S. cyanea alba.
Tanacetum. Tansy.
Teucrium chamædrys.
Thermopsis caroliniana.
Thymus serpyllum.
T. serpyllum argenteus.
T. serpyllum coccineus.
T. serpyllum lanuginosus.
T. serpyllum, Purple.
T. vulgaris. Lemon Thyme.
Tradescantia, Blue.
T., Pink.
Tritoma pfitzeri.
T., Tower of Gold.
Tunica saxifraga.
Valerian, Red.
V., White.
Verbena.
Orchid.
Large Pink.
Old-fashioned Pink.
Old-fashioned Red.
Pink.
Purple.
Red.
Sky-Blue.
Sweetwater Red.
Veronica elegans.
V. incana.
V. repens.
V., Royal Blue.
V. rupestris.
V. spicata.
Vinca minor.
V. minor alba.
Violet, Bird's-Foot.
V., Sweet.
V., White.
Zephyranthes, White.



Howell Nurseries

Boys Bridge Road

KNOXVILLE · TENNESSEE

Phone: 3-2426

SWEETWATER · TENNESSEE



PRICE-LIST, 1943-1944